



69, Conway Drive, Telford Estate, Shrewsbury, SY2 5UY
£1,150 Per Month



69, Conway Drive, Telford Estate, Shrewsbury, SY2 5UY

£1,150 Per Month

VIRTUAL TOUR AVAILABLE: Recently renovated three bedroom semi-detached house located in the popular residential area of Telford Estate, just a short walk from a variety of local amenities. Garage and driveway parking.

Available from: 21/09/24

Description

Comprising: spacious entrance hall, living room, open plan kitchen and dining room, with dishwasher, fridge/freezer, hob, oven and space for washing machine, conservatory. Stairs to first floor landing, two double bedrooms, further single bedroom, bathroom with shower over the bath. Landscaped rear garden. Garage and driveway parking. EPC D.



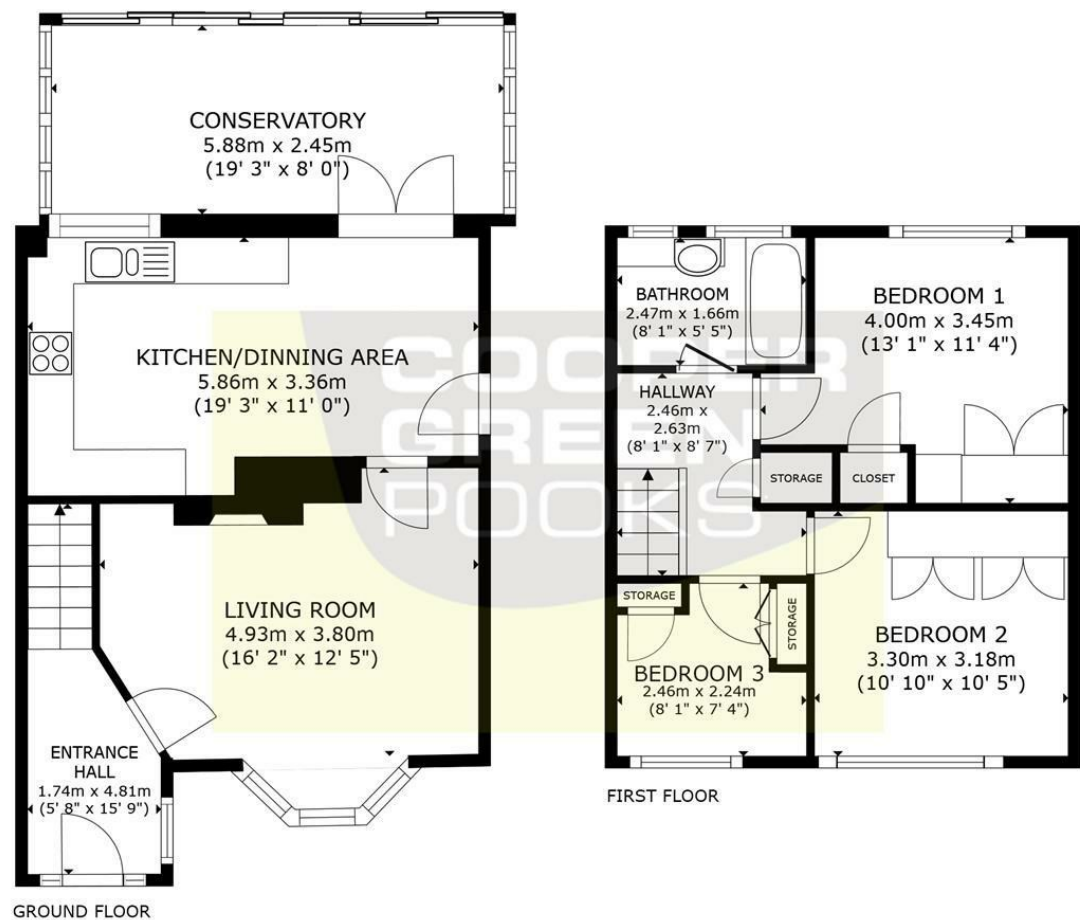
Unfurnished

Council Tax Band: C

Available: 21st September 2024

EPC: D

Floor Plans



GROSS INTERNAL AREA
GROUND FLOOR: 59.3 m² (638 sq ft), FIRST FLOOR: 39.5 m² (425 sq ft)
TOTAL: 98.8 m² (1,063 sq ft)

SIZES AND DIMENSIONS ARE APPROXIMATE, ACTUAL MAY VARY.

These particulars, whilst believed to be accurate are set out as a general outline only for guidance and do not constitute any part of an offer or contract. Intending purchasers should not rely on them as statements of representation of fact, but must satisfy themselves by inspection or otherwise as to their accuracy. No person in this firms employment has the authority to make or give any representation or warranty in respect of the property.